

Venue Visual Story

Russian Hall





About Russian Hall

The Russian Hall is a community hall and performance space in the Strathcona neighborhood.

It is available to rent for concerts, rehearsals, workshops and has a rental space upstairs and downstairs.

The address is
600 Campbell Avenue
Vancouver, BC

To go inside the building there are two steps or you can take the ramp on the left.

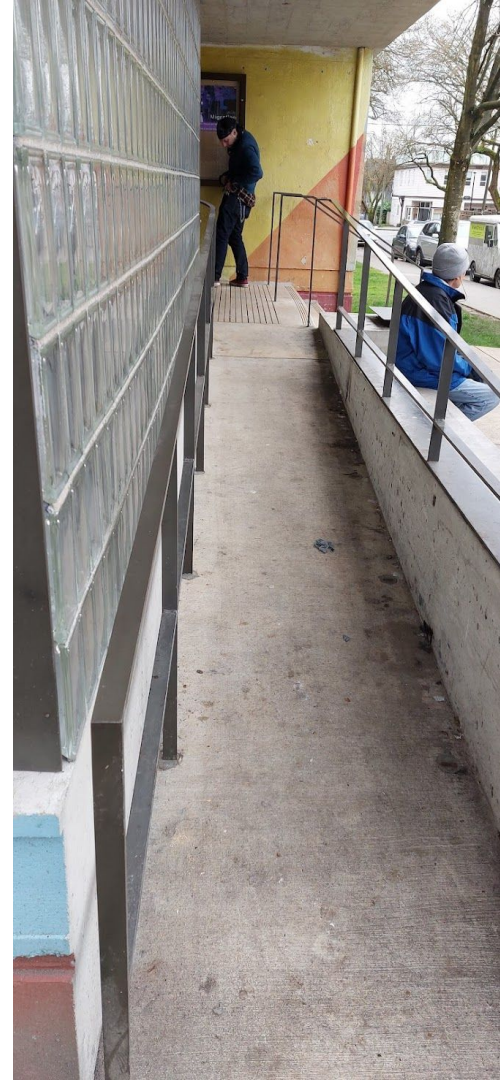


Table of Contents

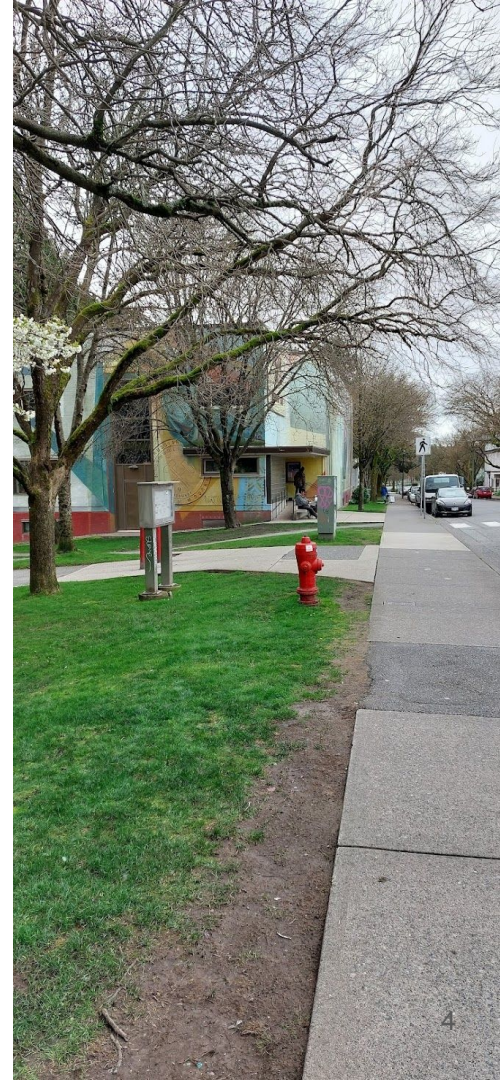
- Page [4: Directions and Parking](#)
- Page [6: When walking from the parking lot to the venue](#)
- Page [7: Public Transportation - Skytrain](#)
- Page [8: Public Transportation - Buses](#)
- Page [11: Inside the Building](#)
- Page [12: Box Office](#)
- Page [13: Front of House / Ushers](#)
- Page [14: Food & Beverage](#)
- Page [15: Going into the Theatre](#)
- Page [17: Going downstairs](#)
- Page [19: Washrooms](#)
- Page [21: Questions?](#)

Directions and Parking

[Link to Russian Hall on Google maps](#)

Driving/Parking

- Street Parking available along Campbell Avenue
- Sometimes it is hard to find street parking close by
- Other options for parking:
 - Raymur Avenue
 - Hastings street
- There is no accessible parking nearby



Public Transportation

The closest bus stops are on Hastings street at Campbell Avenue

These busses stop there:

14, 16, 20, N20 and N35

On the next pages you can see what the bus stop looks like and how to walk to the Russian Hall from

Public Transportation

This is what the west bound Hastings bus stop looks like and is in front of the Strathcona Beer Company

When walking from the bus stop - Bus #14,16,20



This is what the west bound Hastings bus stop looks like and is in front of the Strathcona Beer Company



This is what the east bound Hastings bus stop looks like when you are coming from downtown



From both the bus stops you will see the
RayCam Community Centre.
Walk down Campbell (South) next to RayCam.

The Russian Hall is on this street,
about 200 meter from the corner.



As you get closer this is what
it will look like.
It is across the street from
Wayne Grocery



Inside the Building

This is what it looks like when you come inside.



Buying Tickets

There is no official box office.

Sometimes it is a table set up like this. →

Sometimes they sit at this little bar below.
This space is sometimes also used as a coat check.



Going into the Upstairs Hall (the theatre)



To go into the hall from the lobby,
you walk through these doors.
Often there will be someone to take or scan your ticket.



This is what it looks like when you walk in and
the Hall is empty.

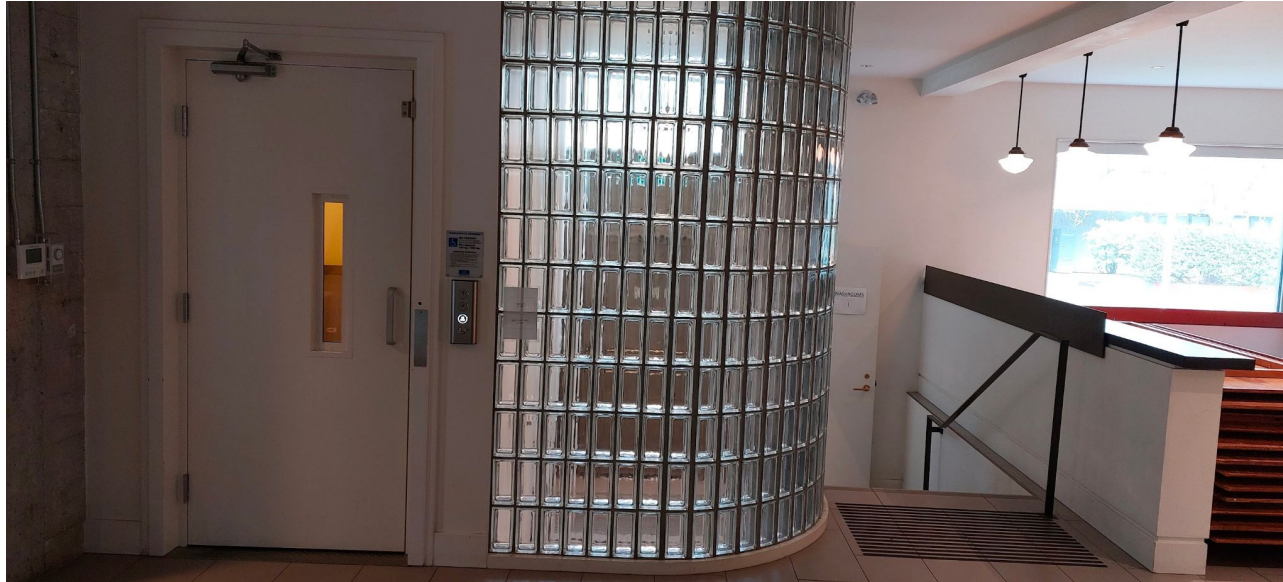
Inside the Upstairs Hall



The hall can be set up in many different ways.

To find out what it will look like for the event you want to come to, you can ask the organizer.

Going downstairs



The washroom are downstairs

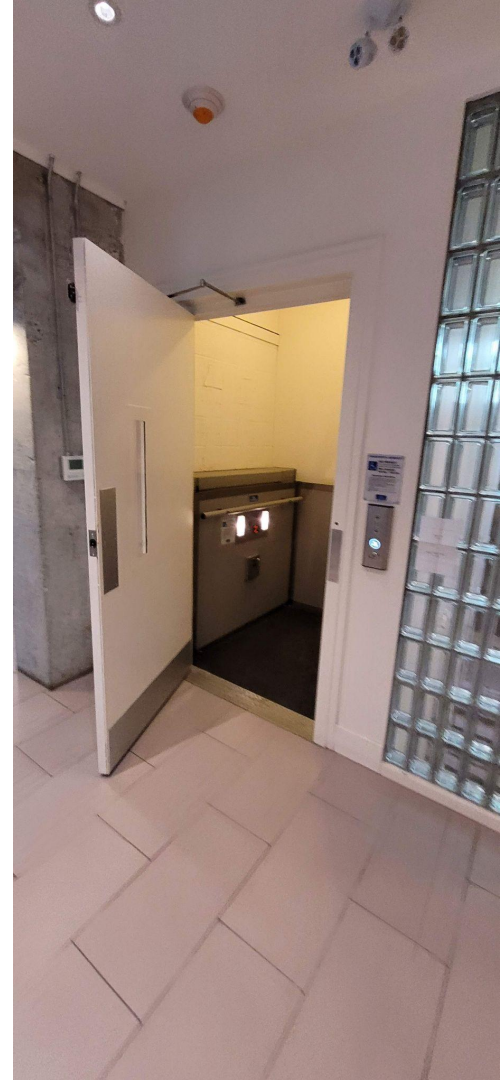
You can take the stairs
or the elevator

Going downstairs

This is what the stairs look like



The elevator is the kind where you need to keep pushing the button to make the elevator go up or down.





Washrooms

All washrooms are to the left
at the bottom of the stairs.

There are women's washrooms with stalls,
Men's washrooms with stalls and urinals
And one accessible washroom.

Everyone is encouraged to use the washroom
they feel most comfortable in.

Everyone is welcome in any bathroom.



Washrooms



This is a picture of the inside of the accessible washroom with a changing table